

For
SIGN
GRAPHICS

Print & Cut Inkjet Printer
equipped with silver ink

Mimaki[®]

CJV300-160Plus

Print 'n' cut



MAGENTISS



Mimaki
Green Technology



CJV300-130/160Plus

High-performance inkjet printer equipped with eco-solvent ink, which is a print & cut printer wherein environmental protection is achieved by means of additional ecology & economy as well as by work efficiency

Labor-saving & Efficiency

Ecology Economy

3 Plus

High image quality
Stability



Labor-saving process & Business efficiency are additional features

This single unit of printer alone enables labels, stickers, car lapping films or the like to be created.

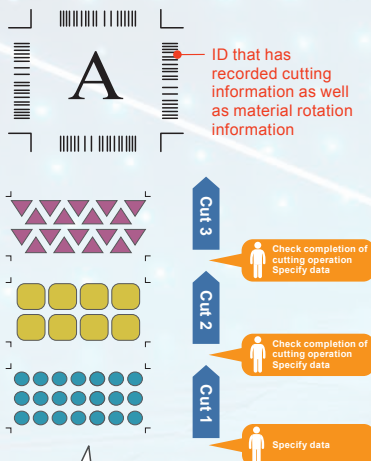
Adoption of ID Cut!

- With this single unit, work efficiency of Print & Cut can be improved -

What is ID Cut?

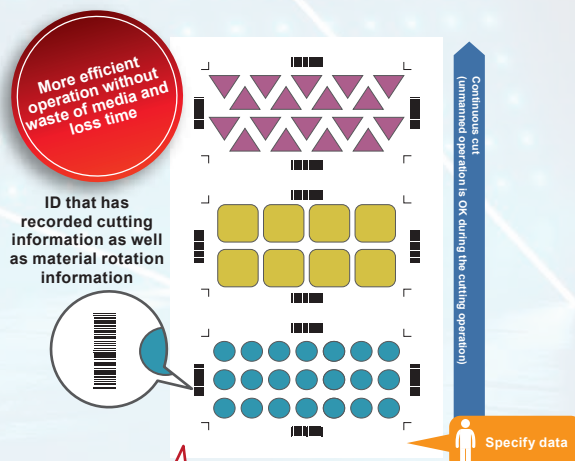
When the printing operation is performed using CJV300-130/160 Plus and RL6 Plus, ID that has recorded cutting information as well as material rotation information is printed out simultaneously. When the register mark sensor reads such ID, it asks the applicable PC to send cutting data information to it, and starts the cutting operation automatically. Since ID is printed out in four directions, a correct cutting operation will be performed because the machine recognizes an orientation of any media, regardless of orientation of such media.

It eliminates the need for any operator to give cutting instruction to each data from RIP software unlike before while it makes it possible to do cutting operation, and prevents media loss due to data transmission mistake.



In the past...

Any operators scanned register marks and specified cut data after each cutting job was completed.



ID Cut function of CJV300-130/160 Plus

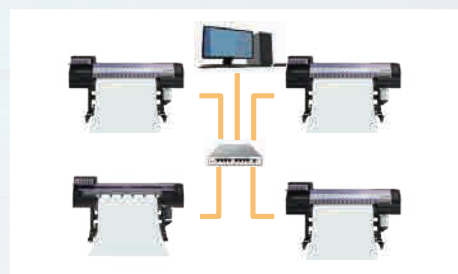
In the ID Cut function, even if there are a large number of types of cut data, any operator performs manual operation only once at first!

Ethernet supported!

- Support for Ethernet connection implements free and efficient work environment -

To the conventional connection method to PC for RIP, Ethernet connection has newly been added.

Unlike the conventional USB connection, connection via Ethernet can be established via network cable, and thus connection to a printer from any PC within network is now available. More free and efficient work-site environment can be put in place, by editing data using any PC in your office, then sending print data directly to a printer in your work operation site, for example.



Ecology & Economy are newly added features

Adoption of Eco-cartridge

A new Mimaki Eco-cartridge(*) has been adopted with a replaceable 600ml ink pack. The Eco-cartridge is a reusable plastic case with a 600ml ink pack that can be replaced by customers. Using the Eco-cartridge will reduce the disposal of plastic 440ml cartridge every time ink is replaced, leading to environmental protection. In addition, the increased ink capacity reduces the need for cartridge replacement and add labor-saving process & business efficiency. The 8 colors (C, M, Y, K, Lc, Lm, Lk, Or) of SS21 600ml ink pack are newly prepared for the Eco-cartridge application.

(*) The Mimaki Eco-cartridge is only compatible with 600ml ink packs.

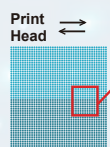


Newly added functions to support higher image quality and stability

MAPS4

In ordinary textile printers, the straight pass boundaries often results in bandings and discoloration due to slight misalignment. The "MAPS4 (Mimaki Advanced Pass System 4)" functionality provides gradation to printed pass boundaries and reduces banding and uneven color, achieving a beautiful printing result.

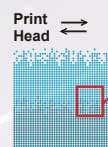
"MAPS4" OFF



Banding occurs at pass boundaries. Image quality is damaged seriously because horizontal streaks and uneven color printing are brought about.

Horizontal streaks and uneven color printing occur!

"MAPS4" ON



Because printing pass boundaries are faded in gradation, a beautiful image quality is ensured by reducing banding and uneven color.

Printing in gradation reduces uneven color!

Adoption of newly designed feeding & winding mechanism

- "End-face guide" for maximum loadable media in weight (45kg) comes equipped with as standard -

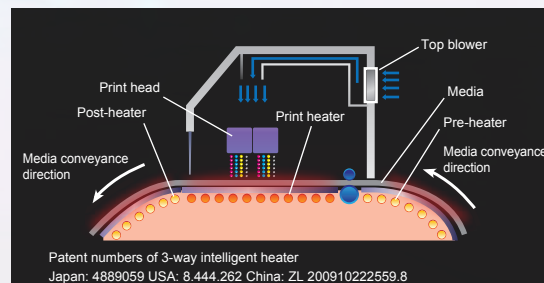
Through renewal of the older feeding & winding mechanism, stability of media conveyance has been improved, and thus the maximum loadable media weight has changed from 40kg to 45kg, making longer-sheet printout available. Also, it is provided with such an end-face guide as standard that prevents edge-surface meandering when any media are wound up, supporting high-quality printout through stable winding.

Our original and patented technology

Mimaki's original 3-way intelligent heater

This 3-way intelligent heater fixes ink droplets placed on media in position. While temperature is controlled with Mimaki's original technology, heat is applied to media, and ink droplets are fixed in position with excellent color development and high-quality image being maintained. It achieves both stable color development and easy handling after output.

- Pre-heater: Heats media to optimum temperature before printing
- Print heater: Dries ink droplets placed on media prior to ink bleeding, improving color development
- Post-heater: Accelerates ink drying, realizing a stable winding
- Top blower: Provides air blow to support ink drying



Patent numbers of 3-way intelligent heater
Japan: 4889059 USA: 8,444,262 China: ZL 200910222559.8

Silver ink achieves impactful expression additionally!

SS21 silver ink can be used. As compared with a conventional silver ink, its brightness which is almost 1.67 times* higher than that of it has been materialized. This makes it possible to provide brilliant and beautiful metallic expression.

* Comparison with our conventional ES3 ink



Providing logo or background with silver color allows for impactful expression.



Software

Newly upgraded RIP software with higher functionality and more user-friendliness

Raster Link 6 PLUS

Added useful functions

- ◆ [ID Cut] for consecutive cutting
- ◆ [Multi layers print] for wider expressiveness
- ◆ [Braille print] for easy operation of braille print

PDF including transparent effect is applicable.

- ◆ PDF data image with transparent effect is faithfully printable as the original.

Specifications

Item		CJV300-130 Plus	CJV300-160 Plus
Printhead		On-demand piezo head (2 staggered printheads)	
Print resolution		360 dpi, 540 dpi, 720 dpi, 1080 dpi and 1440 dpi	
Maximum print width		1,361 mm (53.5 in)	1,610 mm (63.3 in)
Maximum media width		1,371 mm (53.9 in)	1,620 mm (63.7 in)
Ink	Type/Color (*1)	Eco-solvent · SS21 (C, M, Y, K, Lc, Lm, Lk, Or, W, Si) · ES3 (C, M, Y, K, Lc, Lm, W) · BS3 (C, M, Y, K) · BS4 (C, M, Y, K) Water-based sublimation ink · Sb54 (Bl, M, Y, K, Lbl, Lm)	
	Package size (*2)	SS21: 440ml Ink cartridge, 600ml/2L Ink pack (White&silver: 220ml ink cartridge only) BS3/BS4: 600ml/2L Ink pack ES3: 440ml Ink cartridge (White: 220ml ink cartridge only) Sb54: 440ml Ink cartridge /2L Ink pack	
	Circulation system	MCT (Mimaki Circulation Technology) only applies white and silver inks.	
	Media thickness	1.0 mm or less	
Rolled media weight		45 kg (99.2 lb) or less	
Interface		USB 2.0/ Ethernet 1000BASE-T	
Power supply		Single-phase (AC 100-120V/ AC220-240V) x2 50Hz /60Hz ±1Hz	
Power consumption		1440W x 2 or less (AC100V) / 1920W x 2 or less (AC200V)	
Operational environment		Temperature: 20-30 °C (59-86 °F) Humidity: 35-65% Rh (Non condensing)	
Dimensions (W x D x H)		2,525 mm x 700 mm x 1,392 mm (99 in x 28 in x 55 in)	2,775 mm x 700 mm x 1,392 mm (109 in x 28 in x 55 in)
Weight		167 kg (370.4 lb)	178 kg (392.4 lb)

Print speed

4C (CMYK)							
PVC				Banner			
Print mode			Speed (m²/h)	Print mode			Speed (m²/h)
Draft	540x720,4P	Bi	32.7	Super Draft	360x360,1P	Bi	105.9
High Speed	540x720,6P	Bi	24.6	Draft	540x360,2P	Bi	69.2
Standard	720x1080,6P	Bi	20.2	High Speed	540x360,3P	Bi	45.0
High Quality	720x1440,12P	Bi	10.4	Standard	540x720,4P	Bi	32.7
				High Quality	720x1080,6P	Bi	20.2

8C (CMYKLcLmLkOr) / 6C+W (CMYKLcLm+WW/WSi) (CMYKOrLk+WW/WSi)							
PVC				Banner			
Print mode			Speed (m²/h)	Print mode			Speed (m²/h)
Draft	540x360,6P	Bi	22.7	Super Draft	360x360,2P	Bi	50.5
High Speed	540x720,8P	Bi	17.4	Draft	540x360,4P	Bi	33.9
Standard	720x1080,12P	Bi	10.5	High Speed	540x360,6P	Bi	22.7
High Quality	720x1440,24P	Bi	5.3	Standard	540x720,8P	Bi	17.4
				High Quality	720x1080,16P	Bi	7.9

The above print speed is by printed by CJV300-160 Plus.

Supplies

Item	Color	Item No.	Remarks
SS21 GREENGUARD Gold certificated ink	C/M/Y/K Lc/Lm/Or/Lk	SPC-0501x	440ml Ink cartridge
	x...Color C/M/Y/K/Lc/Lm/Or/Lk		
	Cyan	SS21-C-60	600ml Ink pack
	Magenta	SS21-M-60	
	Yellow	SS21-Y-60	
	Black	SS21-K-60	
	Light Cyan	SS21-LC-60	
	Light Magenta	SS21-LC-60	
	Orange	SS21-OR-60	
	Light Black	SS21-LK-60	220ml Ink cartridge
	White	SPC-0504W-2	
	Silver	SPC-0504 Si	
	Cyan	SPC-0588C	
	Magenta	SPC-0588M	
	Yellow	SPC-0588Y	2L Ink pack
	Black	SPC-0588K	
	Light Cyan	SPC-0588LC	
	Light Magenta	SPC-0588LM	
	Orange	SPC-0588Or	
	Light Black	SPC-0588Lk	440ml Ink cartridge
ES3	Cyan	SPC-0440C	
	Magenta	SPC-0440M	
	Yellow	SPC-0440Y	
	Black	SPC-0440K	
	Light Cyan	SPC-0440LC	220ml Ink cartridge
	Light Magenta	SPC-0440LM	
	White	SPC-0433W-2	600ml Ink pack
BS3	Cyan	SPC-0667C	
	Magenta	SPC-0667M	
	Yellow	SPC-0667Y	
	Black	SPC-0667K	
	Cyan	SPC-0693C	2L Ink pack
BS4	Magenta	SPC-0693M	
	Yellow	SPC-0693Y	
	Black	SPC-0693K	
	Cyan	BS4-C-60	600ml Ink pack
	Magenta	BS4-M-60	
	Yellow	BS4-Y-60	
	Black	BS4-K-60	
	Cyan	BS4-C-2L	2L Ink pack
	Magenta	BS4-M-2L	
	Yellow	BS4-Y-2L	
	Black	BS4-K-2L	
Sb54 ECO PASSPORT certificated ink	Blue	SB54-BLT-44	440ml Ink cartridge
	Magenta	SB54-MT-44	
	Yellow	SB54-YT-44	
	Black	SB54-KT-44	
	Light Blue	SB54-LBT-44	
	Light Magenta	SB54-LMT-44	2L Ink pack
	Blue	SB54-BLT-2L	
	Magenta	SB54-MT-2L	
	Yellow	SB54-YT-2L	
	Black	SB54-KT-2L	
	Light Blue	SB54-LBT-2L	
	Light Magenta	SB54-LMT-2L	
MS Cleaning cartridge		SPC-0294	220ml Ink cartridge
Washing liquid		SPC-0259	220ml Ink cartridge
Eco cartridge		OPT-J0361	4 c/s

*1: BS3/BS4 are available in specific countries.

*2: Optional Mimaki Buki Ink System (MBIS3) is required for using 2L ink pack.

GREENGUARD Gold: Applicable products to this "GREENGUARD Gold certification" are acceptable for use in environments such as schools and medical facilities based on the most strict global standard of chemical substance diffusion.

Eco Passport: Safety and security certification of chemical substances, such as dye, pigment, textile auxiliaries and finishing process agent, which are used to produce textile products

●Some of the samples in this catalog are artificial renderings. ●Specifications, design and dimensions stated in this catalog may be subject to change without notice (for technical improvements etc). ●The corporate names and merchandise names written in this catalog are the trademark or registered trademark of the respective corporations. ●Inkjet printers print using extremely fine dots, so colors may vary slightly after replacement of the printing heads. Also note that if using multiple printer units, colors could vary slightly from one unit to other units due to slight individual differences. ●Please note that descriptions and data in this catalog are as of October 2019.



CONTACTEZ-NOUS
 +33 (0)4 28 29 92 27
 magentiss@magentiss.fr
 www.magentiss.fr