



■Software

Newly upgraded RIP software with higher functionality and more user-friendliness

Raster Link 6 PLUS

Added useful functions

- ◆ [ID Cut] for consecutive cutting
- ◆ [Multi layers print] for wider expressiveness
- ◆ [Braille print] for easy operation of braille print

PDF including transparent effect is applicable.

- ◆ PDF data image with transparent effect is faithfully printable as the original.

■Specifications

Item	CJV300-130 Plus	CJV300-160 Plus
Printhead	On-demand piezo head (2 staggered printheads)	
Print resolution	360 dpi, 540 dpi, 720 dpi, 1080 dpi and 1440 dpi	
Maximum print width	1,361 mm (53.5 in)	1,610 mm (63.3 in)
Maximum media width	1,371 mm (53.9 in)	1,620 mm (63.7 in)
Ink	Type/Color (*1)	Eco-solvent · SS21 (C, M, Y, K, Lc, Lm, Lk, Or, W, Si) · ES3 (C, M, Y, K, Lc, Lm, W) · BS3 (C, M, Y, K) · BS4 (C, M, Y, K) Water-based sublimation ink · Sb54 (Bi, M, Y, K, Lbl, Lm)
	Package size (*2)	SS21: 440ml Ink cartridge, 600ml/2L Ink pack (White&silver: 220ml ink cartridge only) BS3/BS4: 600ml/2L Ink pack ES3: 440ml Ink cartridge (White: 220ml ink cartridge only) Sb54: 440ml Ink cartridge /2L Ink pack
Circulation system	MCT (Mimaki Circulation Technology) only applies white and silver inks.	
Media thickness	1.0 mm or less	
Rolled media weight	45 kg (99.2 lb) or less	
Interface	USB 2.0/ Ethernet 1000BASE-T	
Power supply	Single-phase (AC 100-120V/ AC220-240V) x2 50Hz /60Hz ±1Hz	
Power consumption	1440W x 2 or less (AC100V) / 1920W x 2 or less (AC200V)	
Operational environment	Temperature: 20-30 °C (59-86 °F) Humidity: 35-65% Rh (Non condensing)	
Dimensions (W x D x H)	2,525 mm x 700 mm x 1,392 mm (99 in x 28 in x 55 in)	2,775 mm x 700 mm x 1,392 mm (109 in x 28 in x 55 in)
Weight	167 kg (370.4 lb)	178 kg (392.4 lb)

■Print speed

4C (CMYK)							
PVC				Banner			
Print mode		Speed (m ² /h)		Print mode		Speed (m ² /h)	
Draft	540x720,4P	Bi	32.7	Super Draft	360x360,1P	Bi	105.9
High Speed	540x720,6P	Bi	24.6	Draft	540x360,2P	Bi	69.2
Standard	720x1080,6P	Bi	20.2	High Speed	540x360,3P	Bi	45.0
High Quality	720x1440,12P	Bi	10.4	Standard	540x720,4P	Bi	32.7
				High Quality	720x1080,6P	Bi	20.2

8C (CMYKcLmLkOr) / 6C+W (CMYKcLm+WWW/WSi) (CMYKOrLk+WWW/WSi)							
PVC				Banner			
Print mode		Speed (m ² /h)		Print mode		Speed (m ² /h)	
Draft	540x360,6P	Bi	22.7	Super Draft	360x360,2P	Bi	50.5
High Speed	540x720,8P	Bi	17.4	Draft	540x360,4P	Bi	33.9
Standard	720x1080,12P	Bi	10.5	High Speed	540x360,6P	Bi	22.7
High Quality	720x1440,24P	Bi	5.3	Standard	540x720,8P	Bi	17.4
				High Quality	720x1080,16P	Bi	7.9

The above print speed is by printed by CJV300-160 Plus.

■Supplies

Item	Color	Item No.	Remarks		
SS21 GREENGUARD Gold certified ink	C/M/Y/K Lc/Lm/Or/Lk	SPC-0501x	440ml Ink cartridge		
		x...Color			
		C/M/Y/K/Lc/Lm/Or/Lk	600ml Ink pack		
	Cyan	SS21-C-60			
	Magenta	SS21-M-60			
	Yellow	SS21-Y-60			
	Black	SS21-K-60			
	Light Cyan	SS21-LC-60			
	Light Magenta	SS21-LC-60			
	Orange	SS21-OR-60			
	Light Black	SS21-LK-60			
	White	SPC-0504W-2		220ml Ink cartridge	
	Silver	SPC-0504 Si			
	ES3	Cyan	SPC-0588C	2L Ink pack	
Magenta		SPC-0588M			
Yellow		SPC-0588Y			
Black		SPC-0588K			
Light Cyan		SPC-0588LC			
Light Magenta		SPC-0588LM			
Orange		SPC-0588Or			
Light Black		SPC-0588Lk			
Cyan		SPC-0440C	440ml Ink cartridge		
Magenta		SPC-0440M			
Yellow		SPC-0440Y			
Black		SPC-0440K			
BS3		Light Cyan	SPC-0440LC	220ml Ink cartridge	
		Light Magenta	SPC-0440LM		
	White	SPC-0433W-2	600ml Ink pack		
	Cyan	SPC-0667C			
	Magenta	SPC-0667M			
	Yellow	SPC-0667Y			
	Black	SPC-0667K			
	Cyan	SPC-0693C		2L Ink pack	
	Magenta	SPC-0693M			
	Yellow	SPC-0693Y			
	Black	SPC-0693K			
	BS4	Cyan		BS4-C-60	600ml Ink pack
		Magenta	BS4-M-60		
		Yellow	BS4-Y-60		
Black		BS4-K-60			
Sb54 ECO PASSPORT certified ink		Cyan	BS4-C-2L	2L Ink pack	
		Magenta	BS4-M-2L		
		Yellow	BS4-Y-2L		
		Black	BS4-K-2L		
		MS Cleaning cartridge	Blue	SB54-BLT-44	440ml Ink cartridge
			Magenta	SB54-MT-44	
			Yellow	SB54-YT-44	
			Black	SB54-KT-44	
			Light Blue	SB54-LBT-44	
			Light Magenta	SB54-LMT-44	
	Blue		SB54-BLT-2L	2L Ink pack	
	Magenta		SB54-MT-2L		
	Yellow		SB54-YT-2L		
	Black		SB54-KT-2L		
Washing liquid	Light Blue		SB54-LBT-2L	220ml Ink cartridge	
	Light Magenta		SB54-LMT-2L		
MS Cleaning cartridge			SPC-0294	220ml Ink cartridge	
Washing liquid			SPC-0259	220ml Ink cartridge	
Eco cartridge		OPT-J0361	4 c/s		

*1: BS3/BS4 are available in specific countries.
 *2: Optional Mimaki Buki Ink System (MBIS) is required for using 2L Ink pack.
 GREENGUARD Gold: Applicable products to this "GREENGUARD Gold certification" are acceptable for use in environments such as schools and medical facilities based on the most strict global standard of chemical substance diffusion.
 Eco Passport: Safety and security certification of chemical substances, such as dye, pigment, textile auxiliaries and finishing process agent, which are used to produce textile products

●Some of the samples in this catalog are artificial renderings. ●Specifications, design and dimensions stated in this catalog may be subject to change without notice (for technical improvements etc). ●The corporate names and merchandise names written in this catalog are the trademark or registered trademark of the respective corporations. ●Inkjet printers print using extremely fine dots, so colors may vary slightly vary after replacement of the printing heads. Also note that if using multiple printer units, colors could vary slightly from one unit to other units due to slight individual differences. ●Please note that descriptions and data in this catalog are as of October 2019.

Mimaki MIMAKI ENGINEERING CO., LTD.
 2182-3 Shigeno-otsu, Tomi-city, Nagano 389-0512, Japan
 Tel: +81-268-64-2281

Mimaki Global Network

USA	MIMAKI USA, INC.	Europe	MIMAKI EUROPE B.V.
Brazil	MIMAKI BRASIL COMERCIO E IMPORTACAO LTDA	Indonesia	PT. MIMAKI INDONESIA
India	MIMAKI INDIA PRIVATE LIMITED	Australia	MIMAKI AUSTRALIA PTY. LTD.
Taiwan	MIMAKI ENGINEERING (TAIWAN) CO.,LTD.	China	SHANGHAI MIMAKI TRADING CO.,LTD.
Singapore	MIMAKI SINGAPORE PTE. LTD.	Thailand	MIMAKI (THAILAND) CO.,LTD.

MAGENTISS

Mimaki AUTHORIZED PARTNER
 DISTRIBUTEUR OFFICIEL DE LA MARQUE **Mimaki**
 MAGENTISS - 1 rue René Cassin - 69740 GENAS - France
 magentiss@magentiss.fr
 Support technique +33 (0)4 28 29 92 27
 www.magentiss.fr DB10352-01

For
SIGN
GRAPHICS

Print & Cut Inkjet Printer
equipped with silver ink



CJV300Plus Series

CJV300-130/160Plus



CJV300-130/160 Plus

High-performance inkjet printer equipped with eco-solvent ink, which is a print & cut printer wherein environmental protection is achieved by means of additional ecology & economy as well as by work efficiency



Labor-saving process & Business efficiency are additional features



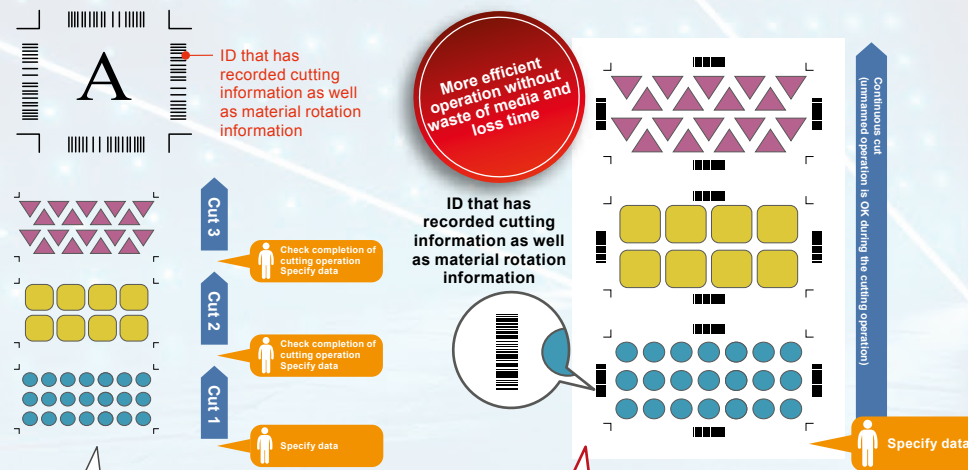
This single unit of printer alone enables labels, stickers, car lapping films or the like to be created.

Adoption of ID Cut!

- With this single unit, work efficiency of Print & Cut can be improved -

What is ID Cut?

When the printing operation is performed using CJV300-130/160 Plus and RL6 Plus, ID that has recorded cutting information as well as material rotation information is printed out simultaneously. When the register mark sensor reads such ID, it asks the applicable PC to send cutting data information to it, and starts the cutting operation automatically. Since ID is printed out in four directions, a correct cutting operation will be performed because the machine recognizes an orientation of any media, regardless of orientation of such media.

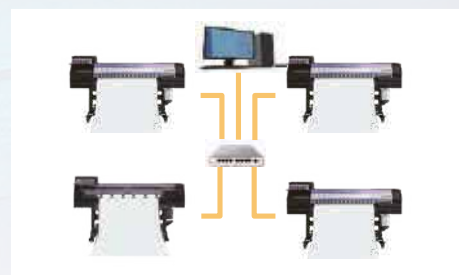


In the past...

Any operators scanned register marks and specified cut data after each cutting job was completed.

ID Cut function of CJV300-130/160 Plus

In the ID Cut function, even if there are a large number of types of cut data, any operator performs manual operation only once at first!



Ethernet supported!

- Support for Ethernet connection implements free and efficient work environment -

To the conventional connection method to PC for RIP, Ethernet connection has newly been added.

Unlike the conventional USB connection, connection via Ethernet can be established via network cable, and thus connection to a printer from any PC within network is now available. More free and efficient work-site environment can be put in place, by editing data using any PC in your office, then sending print data directly to a printer in your work operation site, for example.

Ecology & Economy are newly added features

Adoption of Eco-cartridge

A new Mimaki Eco-cartridge(*) has been adopted with a replaceable 600ml ink pack. The Eco-cartridge is a reusable plastic case with a 600ml ink pack that can be replaced by customers. Using the Eco-cartridge will reduce the disposal of plastic 440ml cartridge every time ink is replaced, leading to environmental protection. In addition, the increased ink capacity reduces the need for cartridge replacement and add labor-saving process & business efficiency. The 8 colors (C, M, Y, K, Lc, Lm, Lk, Or) of SS21 600ml ink pack are newly prepared for the Eco-cartridge application.



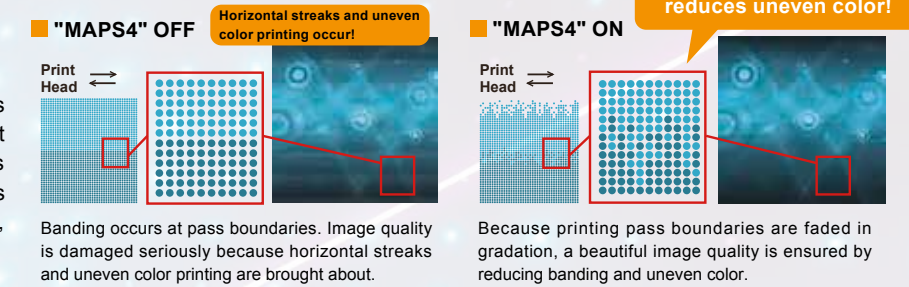
(*) The Mimaki Eco-cartridge is only compatible with 600ml ink packs.



Newly added functions to support higher image quality and stability

MAPS4

In ordinary textile printers, the straight pass boundaries often results in bandings and discoloration due to slight misalignment. The "MAPS4 (Mimaki Advanced Pass System 4)" functionality provides gradation to printed pass boundaries and reduces banding and uneven color, achieving a beautiful printing result.



Adoption of newly designed feeding & winding mechanism

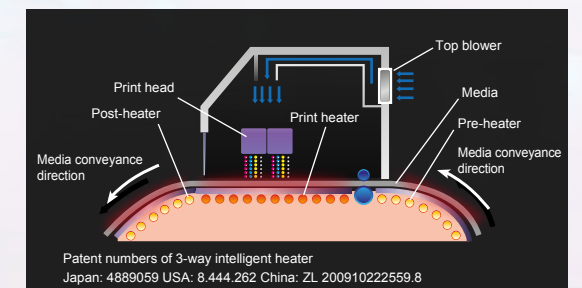
- "End-face guide" for maximum loadable media in weight (45kg) comes equipped with as standard -

Through renewal of the older feeding & winding mechanism, stability of media conveyance has been improved, and thus the maximum loadable media weight has changed from 40kg to 45kg, making longer-sheet printout available. Also, it is provided with such an end-face guide as standard that prevents edge-surface meandering when any media are wound up, supporting high-quality printout through stable winding.

Our original and patented technology Mimaki's original 3-way intelligent heater

This 3-way intelligent heater fixes ink droplets placed on media in position. While temperature is controlled with Mimaki's original technology, heat is applied to media, and ink droplets are fixed in position with excellent color development and high-quality image being maintained. It achieves both stable color development and easy handling after output.

- Pre-heater: Heats media to optimum temperature before printing
- Print heater: Dries ink droplets placed on media prior to ink bleeding, improving color development
- Post-heater: Accelerates ink drying, realizing a stable winding
- Top blower: Provides air blow to support ink drying



Silver ink achieves impactful expression additionally!

SS21 silver ink can be used. As compared with a conventional silver ink, its brightness which is almost 1.67 times* higher than that of it has been materialized. This makes it possible to provide brilliant and beautiful metallic expression.

* Comparison with our conventional ES3 ink



Providing logo or background with silver color allows for impactful expression.